

ENGINEERING, MANUFACTURING SUBCONTRACTING SERVICES

- ENGINEERING & DESIGN
- MATERIAL
- CASTING & FOUNDRY
- CNC MACHINING

- FINISHING
- HEAT TREATMENTS
- ASSEMBLY
- INSPECTION & TESTING

- PROTOTYPE MANUFACTURING
- SHEET METAL PROCESSING
- PLASTICS PROCESSING
- CONTRACT MANUFACTURING



www.turcont.com

C A T A L O G U E



TURCONT

Your one-stop source!



ABOUT US

Turcont Engineering & Manufacturing Co Ltd is a family-run company serving in machining industry as one-stop shop for all needs of its clients since 2002. It is based in the city of Konya in Turkey.

The company serves its customers in design, engineering, material supply, casting & foundry, machining, finishing, heat treatment, assembly, inspection & testing, sheet metal processing, prototype manufacturing and logistics operations.

It provides its services to several industries including machinery manufacturing, pump, valves, energy, mining, rail, marine, automotive, oil&gas, medical and OEM productions.





MILESTONES

4

1973

The founder, Mr. Selami Yildirim, started his career

1986 - 2002

Mr. Selami Yildirim came back to Turkey, established a company with his brother

2011

Mr. Fatih Yildirim, took over the company from his father, became new Managing Director after working for 4 years at other casting and machining companies

2015

First export contract signed, new machinery investments made, several export sales accomplished

2020 - June

The company's name has been changed from KONTEK to TURCONT ENGINEERING & MANUFACTURING LTD

1980 - 1986

Mr. Selami Yildirim worked in Germany as welding foreman for 6 years

2002

Mr. Selami Yildirim established his own company named KONTEK HYDRAULICS

2015

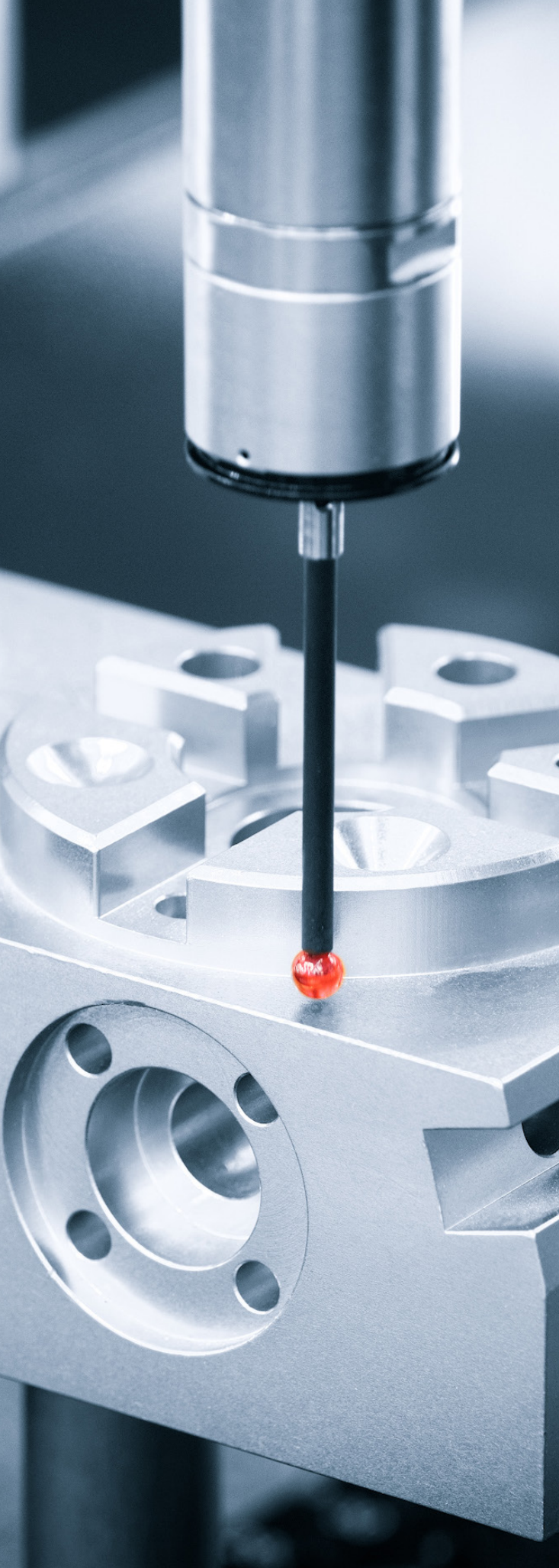
KONTEK moved to bigger facility, 1.000 sqm, received ISO 9001 quality certificate

2019

KONTEK moved to its new, latest technology facility, 2.400 sqm

5





QUALITY SYSTEM

As Turcont, we hold internationally recognized quality certificates of ISO 9001:2015, ISO 14001:2015, ISO 45001:2018.

TURCONT's Quality Management System ensures monitoring the whole manufacturing process using various quality control methods. Also, we have the exclusive authorization to perform quality control analyses and present them as evidence to identify and solve the problem in a short time. Quality is our priority in production to meet the requirements of our customers. Besides, we follow advanced quality control procedures such as APQP, FMEA, PPAP, and MSA.

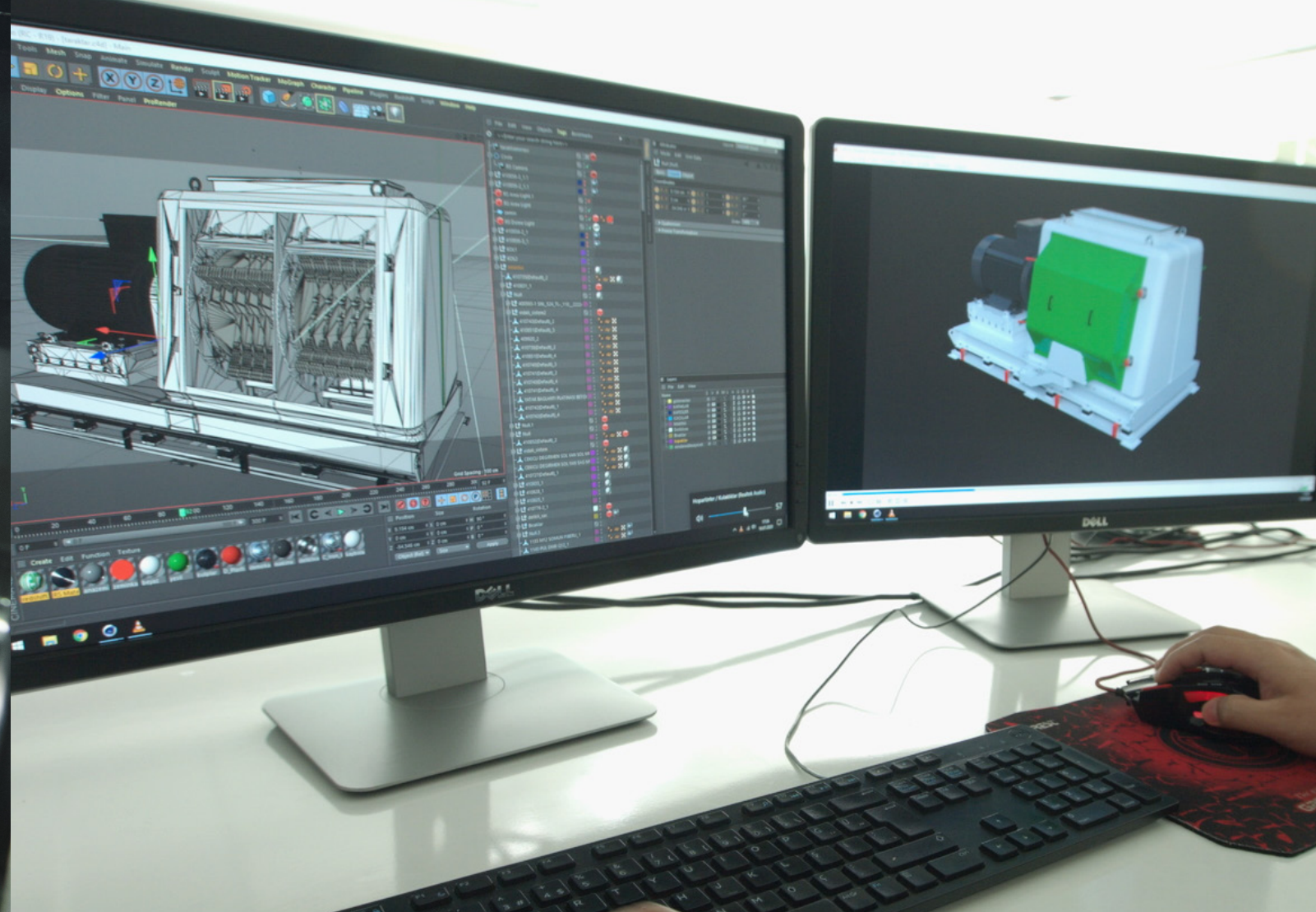
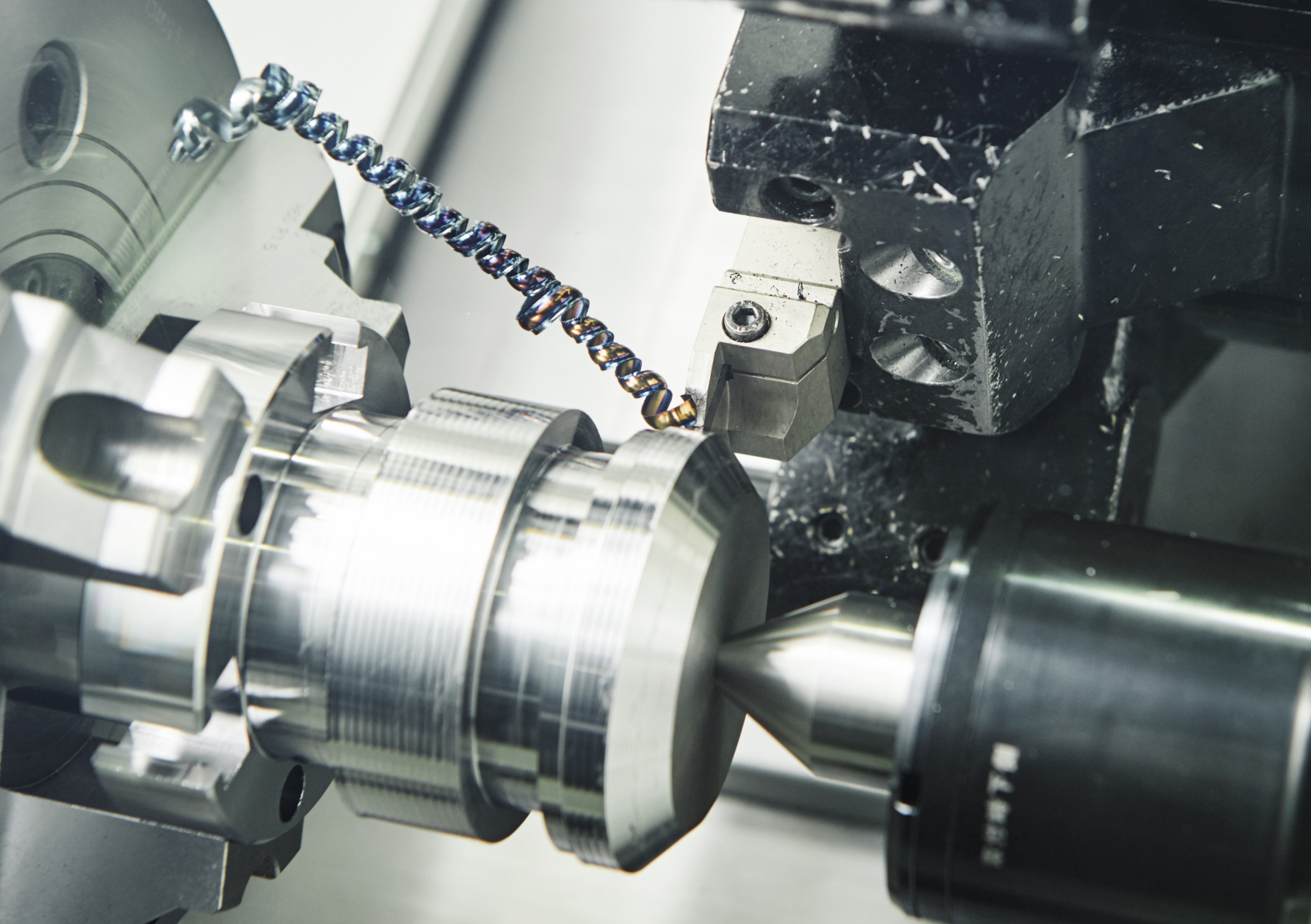


FACTORY

Our factory is located in Karatay Industrial Zone, 11 minutes away from Konya International Airport. We moved these facilities in 2019.

Our factory with figures:

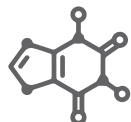
- Total 2.400 sqm (1.400 sqm indoor / 1.000 sqm outdoor)
- The building consists of Management Offices, Production, Social Areas
- Single part manufacturing capacity: 6.000 kg max
- Machining capacity: Ø 2.000 mm max
- Manufacturing capacity per month: 300 tonnes
- Renewed Inspection Testing Unit - New CMM Machine !
- 18 Employees (12 Blue collar + 6 white collar)
- 80 + people with suppliers & solution partners



SERVICES WE OFFER



ENGINEERING &
DESIGN



MATERIAL



CASTING &
FOUNDRY



CNC
MACHINING



FINISHING



HEAT
TREATMENTS



ASSEMBLY



INSPECTION &
TESTING



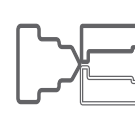
CONTRACT
MANUFACTURING



PROTOTYPE
MANUFACTURING



SHEET METAL
PROCESSING



PLASTICS
PROCESSING

ENGINEERING & DESIGN

- Engineering Support
- 3D CAD Modeling
- Mechanical Design
- 3D Scanning
- 3D Printing
- 3D Rendering
- CNC Machining
- Surface Finishing



MATERIAL & DESIGN

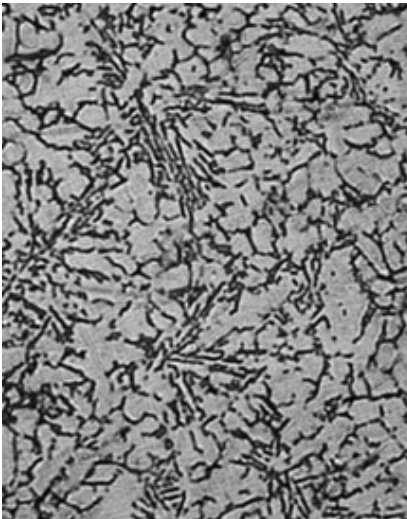
In order to decide which material would be best for your parts, you may use below information.

Metals: Metals are the parts with higher tolerance than plastics.

Plastics: Plastics cost less than metals, but it should be kept in mind that plastics get distorted by the time because of moisture's and heat's bad effects on plastics.

Sheet Metals: These parts have reasonable costs compared to machined parts.

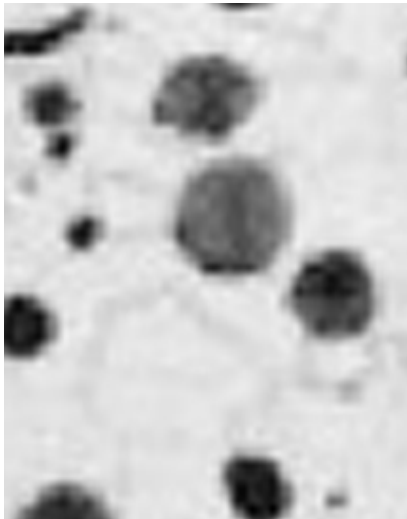
For prototyping processes or low-volume orders, it is highly recommended to use stainless steel and aluminum as these do not need secondary finishing.



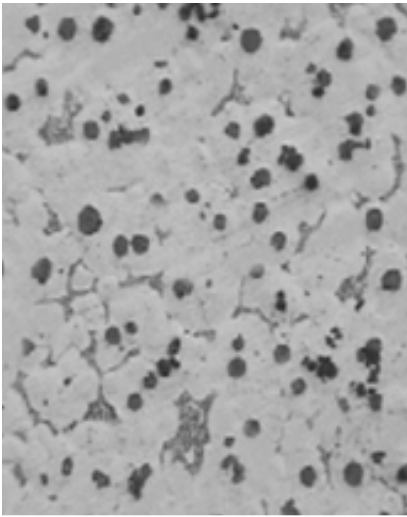
Aluminum Casting



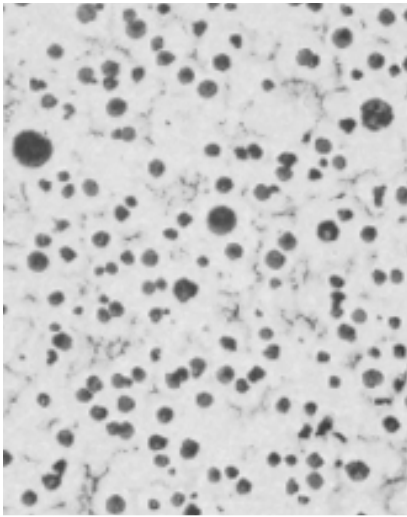
Grey Cast Iron



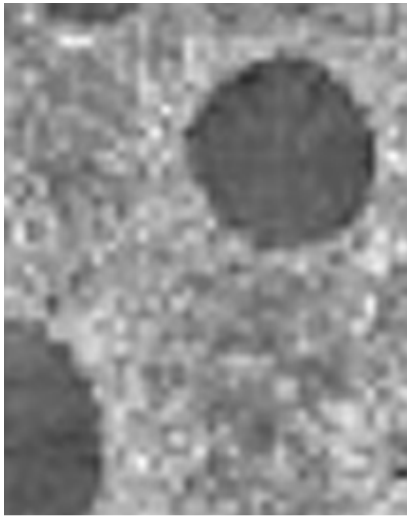
Spheroidal Graphite Iron (S.G)



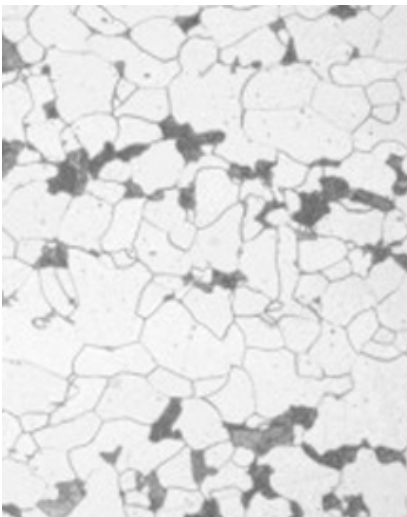
Ductile Ni - Resist Iron



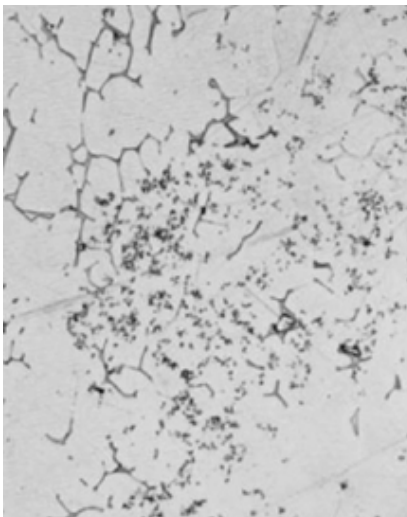
Silicon Molybdenum (SiMo)



Austempered Ductile Iron (ADI)



Steel Casting



Stainless Steel Casting



Aluminum



Brass



Bronze



Copper



Steel



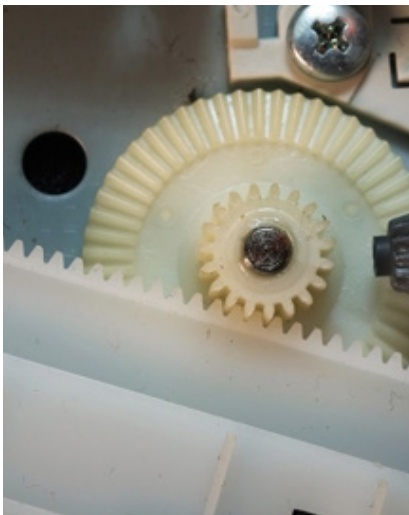
Stainless Steel



Carbon Fiber



Laminated Fiberglass



Nylon



Polycarbonate



Polyethylene



Polypropylene



Polystyrene



PTFE



PVC



Rubber



NBR Nitrile



Neoprene



Silicone



CASTING & FOUNDRY

Turcont Engineering & Manufacturing Ltd applies below foundry and casting processes depending on customers' requirements:

- Automatic Moulding
- Chemically Bonded Sand Moulding
- Hand Moulding
- Investment Casting
- Semi - Automatic Moulding
- Shell Moulding



CNC MACHINING

With its professional CNC machine shop and specialized operators, Turcont Engineering & Manufacturing Ltd has the experience and capacity to carry out precision and ultra-precision CNC machining works. As Turcont, we do not only complete and deliver your orders in time but also provide a price advantage. Besides offering our precision and ultra-precision CNC machining services at competitive prices, we also provide reliable and personalized customer service after on-time delivery of your order.



- CNC TURNING
- CNC VERTICAL TURNING
- CNC HORIZONTAL MILLING
- CNC VERTICAL MILLING
- MECHANICAL TURNING



Buff Polishing

FINISHING

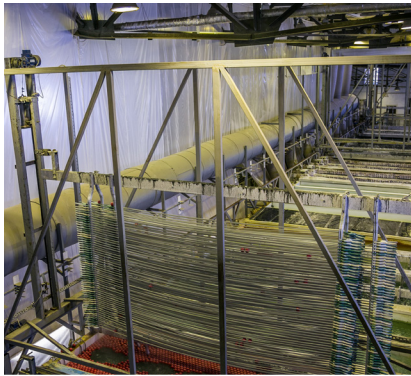
- ANODIZING
- BLACK OXIDE
- PLATING
- LASER MARKING
- POWDER COATING
- SURFACE GRINDING
- ABRASIVE BLASTING
- VIBRATORY POLISHING
- HOT DIP GALVANIZING
- CYLINDRICAL GRINDING
- WET COATING / PRIMING
- CATAPHORESIS TREATMENT
- BUFF POLISHING



Anodizing



Black Oxide



Plating



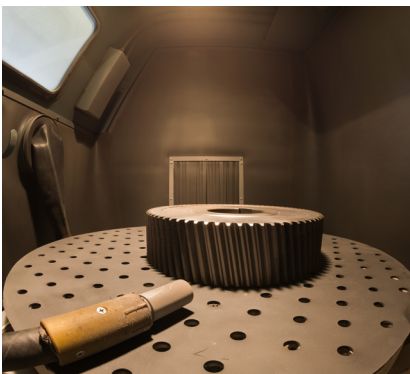
Laser Marking



Powder Coating



Surface Grinding



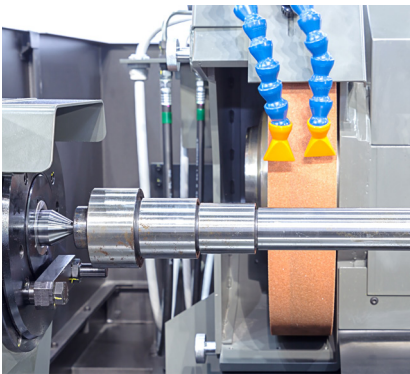
Abrasive Blasting



Vibratory Polishing



Hot Dip Galvanizing



Cylindrical Grinding



Wet Coating / Priming



Cataphoresis Treatment





HEAT TREATMENTS

- ANNEALING
 - Stress - Relief Annealing
 - Recrystallization Annealing
 - Normalization Annealing
 - Softening Annealing
- HARDENING
- TEMPERING
- CASE HARDENING
- INDUCTION HARDENING





ASSEMBLY

Turcont Contract Manufacturing & Assembly Services serve the customers with its up to date technologies and facilities, such as leading-edge quality control department and temperature controlled calibration facilities and dust-free clean rooms. With the latest technology in use and total quality management systems applied, Turcont guarantees the maximum quality for each part and component it processes.

INSPECTION & TESTING

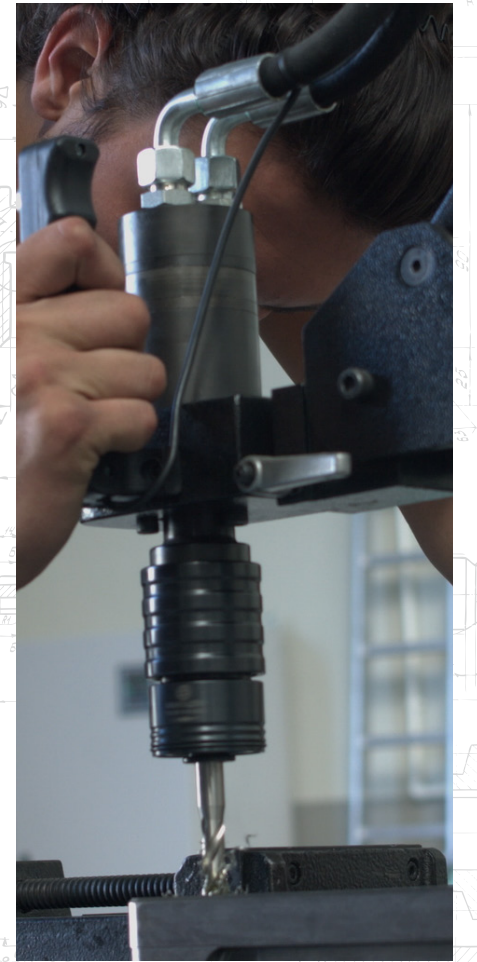
- Dimensional Inspection
- Metallographic Examination
- Chemical Analysis
- Hardness Testing
- Tensile Test
- Impact Testing
- Visual Inspection
- Liquid Penetrant Testing
- Magnetic Particle Testing
- Ultrasonic Testing
- Radiographic Testing
- Hydrostatic Testing





We provide following product development services:

- Concept Design Engineering
- Design for Manufacturability
- Prototype Development
- Production and marketing presentations



PROTOTYPE MANUFACTURING

- Engineering Support
- 3D Cad Modelling
- Mechanical Design
- 3D Scanning
- 3D Printing
- 3D Rendering
- CNC Machining
- Surface Finishing





SHEET METAL PROCESSING

We are capable of providing the following services:

- LASER CUTTING
- SHEET METAL STAMPING
- LASER WELDING
- ASSEMBLY SERVICES

PLASTICS PROCESSING

Turcont's manufacturing ability covers a wide range of plastics products, including but not limited to plastic enclosures:

- for plastic containers for food and non-food products,
- consumer electronics,
- plastic components for the automotive industry etc...



CONTRACT MANUFACTURING

With its widespread network of manufacturing partners, TURCONT offers high-quality product engineering support across the World providing you a cost advantage.

Our design team reviews the designs and drawings of the products before beginning to machining process to ensure receiving the intended design properly. Thus, they have a benchmark to compare the quality of the product with the intended design before bearing a high cost for machining.

There will be a dedicated project management team in contact with you to coordinate all the details about your project. Thus, your requirements in bespoke prototypes production or mass production projects are met, as well as, the details about purchasing, shipping, and subsequent marketing procedures are decided.

30



INDUSTRIES SERVED

- Automotive
- Rail
- Marine
- Mining
- Oil&Gas
- Energy
- Pumps
- Valves
- Hydraulic
- Machinery Manufacturing
- General OEM's
- Medical



31



EXPORT & LOGISTICS

We provide full services to our customers with different freight options:

- SEAFREIGHT
 - Less Container Load
 - Full Container Load (10 DC / 20 DC / 40 DC)
- AIRFREIGHT
- FULL TRUCK / PARTIAL LOADING
- TRAIN

PACKAGING SOLUTIONS



RUST
PREVENTATIVES



VCI
BAGS



BUBBLE
FILMS



FOAMS



CARTONS /
CARDBOARDS



WOODEN
BOXES



WOODEN
BOXES with
HINGES



GITTER
BOXES



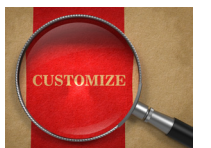
WOOD
PALLET



PLASTIC
PALLET



STRETCH FILM
WRAP UPS



CUSTOMIZED
SOLUTIONS

DELIVERED
PRODUCTS &
PROJECTS



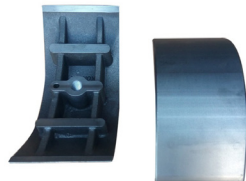
Aluminium Oil Cover	
Material	GAICu4,5
Weight	1,50 kg
Dimensions	Ø300 mm x 60 mm
Project	AUTOMOTIVE
Country	TURKEY



Peristaltic Pump Wheel	
Material	EN 1563 / EN-GJS-400-15 (GGG 40)
Weight	4,80 kg
Dimensions	Ø230 mm x 50 mm
Project	PUMP
Country	FRANCE



Peristaltic Pump Body	
Material	EN 1563 / EN-GJS-400-15 (GGG 40)
Weight	4,10 kg
Dimensions	Ø260 mm x 65 mm
Project	PUMP
Country	FRANCE



Peristaltic Pump Shoe	
Material	EN 1563 / EN-GJS-400-15 (GGG 40)
Weight	6,20 kg
Dimensions	300 mm x 70 mm x 50 mm
Project	PUMP
Country	FRANCE



Forged Screw Coupling	
Material	AISI 1050 / C50E (1.1206)
Weight	34,00 kg
Dimensions	800 mm x 210 mm x 120 mm
Project	RAILWAY
Country	MOROCCO



Forged Biel Arm	
Material	EN C40 (1.0511) / AISI 1040
Weight	3,30 KG
Dimensions	190 mm x 85 mm x 45 mm
Project	MACHINERY MANUFACTURING
Country	TURKEY



Pump Impeller	
Material	EN 1561 / EN-GJL-200 (GG 20)
Weight	3,90 KG
Dimensions	Ø216 mm x 60 mm
Project	PUMP
Country	GERMANY



Forged Steel Nut	
Material	EN C40 (1.0511) / AISI 1040
Weight	5,30 KG
Dimensions	210 mm x 50 mm
Project	RAILWAY
Country	MOROCCO





Forged Steel Hook	
Material	AISI 1050 / C50E (1.1206)
Weight	47,00 KG
Dimensions	465 mm x 170 mm
Project	RAILWAY
Country	MOROCCO



Crankshaft	
Material	EN C40 (1.0511) / AISI 1040
Weight	4,40 KG
Dimensions	Ø60 mm x 400 mm
Project	MACHINERY MANUFACTURING
Country	TURKEY



Suspension Ring	
Material	AISI 1050 / C50E (1.1206)
Weight	0,20 KG
Dimensions	190 mm x 80 mm x 10 mm
Project	RAILWAY
Country	MOROCCO



Brake Shoe	
Material	GS-52 / GE 260
Weight	5,90 KG
Dimensions	420 mm x 140 mm
Project	RAILWAY
Country	MOROCCO



Chain Pulley	
Material	GS-60N / GE300 (1.0558)
Weight	260 KG
Dimensions	680 mm x 240 mm
Project	ENERGY
Country	UNITED KINGDOM



Cast Body	
Material	EN 1563 / EN-GJS-400-15 (GGG 40)
Weight	15,00 KG
Dimensions	170 mm x 220 mm
Project	MACHINERY MANUFACTURING
Country	TURKEY



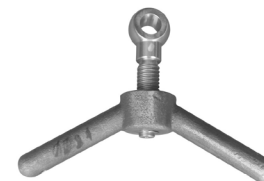
Forged Steel Wedge	
Material	AISI 1050 / C50E (1.1206)
Weight	1,10 KG
Dimensions	30 mm x 310 mm
Project	RAILWAY
Country	MOROCCO



Investment Casting Tool Parts	
Material	GS-52 / GE 260
Weight	0,1 KG
Dimensions	5 mm x 20 mm
Project	MACHINERY MANUFACTURING
Country	TURKEY



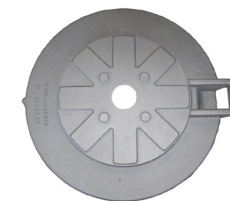
Exhaust Manifold	
Material	EN 1563 / EN-GJS-400-15 (GGG40)
Weight	11,50 KG
Dimensions	630 mm X 180 mm
Project	AUTOMOTIVE
Country	TURKEY



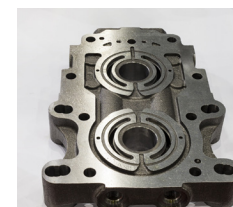
Screw and Nut	
Material	GS-52 / GE 260
Weight	1,80 KG
Dimensions	170 mm x 65 mm
Project	RAILWAY
Country	MOROCCO



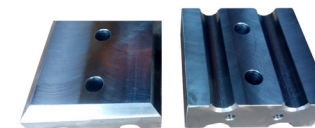
Forged Biel Arm	
Material	EN C40 (1.0511) / AISI 1040
Weight	5,40 KG
Dimensions	410 mm x 130 mm
Project	RAILWAY
Country	MOROCCO



Generator Cover	
Material	EN 1561 / EN-GJL-200 (GG 20)
Weight	27,00 KG
Dimensions	Ø450 mm x 280 mm
Project	ENERGY
Country	CZECH REPUBLIC



Pump Plate	
Material	EN 1561 / EN-GJL-250 (GG 25)
Weight	11,90 KG
Dimensions	180 mm x 340 mm x 25 mm
Project	HYDRAULIC
Country	TURKEY



Tensioning Flat	
Material	EN C40 (1.0511) / AISI 1040
Weight	1,10 KG
Dimensions	80 mm x 110 mm X 16 mm
Project	MACHINERY MANUFACTURING
Country	TURKEY



Turbine Disc	
Material	AISI 4140 / 42CrMo4
Weight	5,50 KG
Dimensions	Ø380 mm x 20 mm
Project	MACHINERY MANUFACTURING
Country	TURKEY



Endless Screw And Gear	
Material	AISI 4140 / 42CrMo4
Weight	4,80 KG
Dimensions	Ø70 mm x 380 mm
Project	MACHINERY MANUFACTURING
Country	TURKEY



Screw And Nut

Material	AISI 4140 / 42CrMo4
Weight	2,90 KG
Dimensions	Ø45 mm x 430 mm
Project	MACHINERY MANUFACTURING
Country	TURKEY



Invesment Casting Healthcare Parts

Material	EN 1.4301 / AISI 304
Weight	0,40 KG
Dimensions	25 mm x 60 mm x 8 mm
Project	MEDICAL
Country	TURKEY



Invesment Casting Automotive Parts

Material	GS-52 / GE 260
Weight	0,50 KG
Dimensions	50 mm x 35 mm
Project	AUTOMOTIVE
Country	TURKEY



Gear Box

Material	EN 1561 / EN-GJL-300 (GG 30)
Weight	60 KG
Dimensions	650 mm x 390 mm x 240 mm
Project	MACHINERY MANUFACTURING
Country	TURKEY



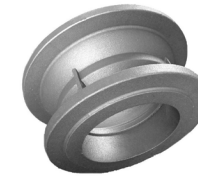
Exhaust Manifold

Material	G-AISI70Mg
Weight	3,70 KG
Dimensions	320 mm x 140 mm x 70 mm
Project	AUTOMOTIVE
Country	TURKEY



Generator Cover

Material	EN 1561 / EN-GJL-200 (GG 20)
Weight	Ø710 mm x 340 mm
Dimensions	85,00 KG
Project	ENERGY
Country	CZECH REPUBLIC



Cast Steel Valve Body

Material	GP240GH (1.0619)
Weight	24,00 KG
Dimensions	270 mm x 160 mm
Project	VALVE
Country	TURKEY



Circulation Pump

Material	EN 1561 / EN-GJL-250 (GG 25)
Weight	16,00 KG
Dimensions	370 mm X 160 mm
Project	PUMP
Country	TURKEY



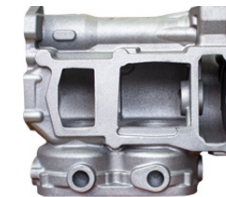
Filter Housing

Material	EN 1561 / EN-GJL-200 (GG 20)
Weight	4,00 KG
Dimensions	Ø140 mm x 120 mm
Project	HYDRAULIC
Country	GERMANY



Exhaust Manifold

Material	EN 1563 / EN-GJS-500-7 (GGG 50)
Weight	8,50 KG
Dimensions	310 mm x 160 mm
Project	AUTOMOTIVE
Country	TURKEY



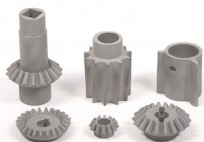
Compressor Body

Material	EN 1561 / EN-GJL-250 (GG 25)
Weight	27,00 KG
Dimensions	320 mm x 200 mm
Project	AUTOMOTIVE
Country	TURKEY



Circulation Pump

Material	EN 1561 / EN-GJL-250 (GG 25)
Weight	10,50 KG
Dimensions	420 mm x 200 mm
Project	AUTOMOTIVE
Country	TURKEY



Invesment Casting Machinery Parts

Material	1.7131 / 16MnCr5
Weight	0,60 KG
Dimensions	Ø40 mm x 60 mm
Project	MACHINERY MANUFACTURING
Country	TURKEY



Cast Alumunium Rung

Material	G-AISI70Mg
Weight	1,40 KG
Dimensions	210 mm x 140 mm
Project	RAILWAY
Country	MOROCCO



Gear Pump Body

Material	EN 1561 / EN-GJL-300 (GG 30)
Weight	6,00 KG
Dimensions	180 mm x 100 mm
Project	HYDRAULIC
Country	TURKEY



Valve Body

Material	EN 1561 / EN-GJL-250 (GG 25)
Weight	21,00 KG
Dimensions	360 mm x 220 mm
Project	VALVE
Country	TURKEY

NOTES

NOTES





TURCONT MUHENDISLIK IMALAT SAN. VE TIC. LTD. STI.

Registered in Turkey - Vat No: 576 051 214 5 - Vat Office: Selcuk - D-U-N-S® Number: 53-314-8299

📍 Fevzi Cakmak Mh. Elit San. Sit. 10757.Sk. No:6A, ZIP Code: 42050, Karatay - Konya, TURKEY

☎ +90 332 606 09 48

☎ +90 332 606 09 49

☎ +90 332 606 09 49

✉ info@turcont.com

✉ sales@turcont.com

✉ turcontengineering@outlook.com

www.turcont.com